



Lahdan

Group



Complete Slaughterhouse Solution

Complete Slaughterhouse Solution

Project Design & Engineering

Slaughter Line

Chiller Line

Rendering Plant

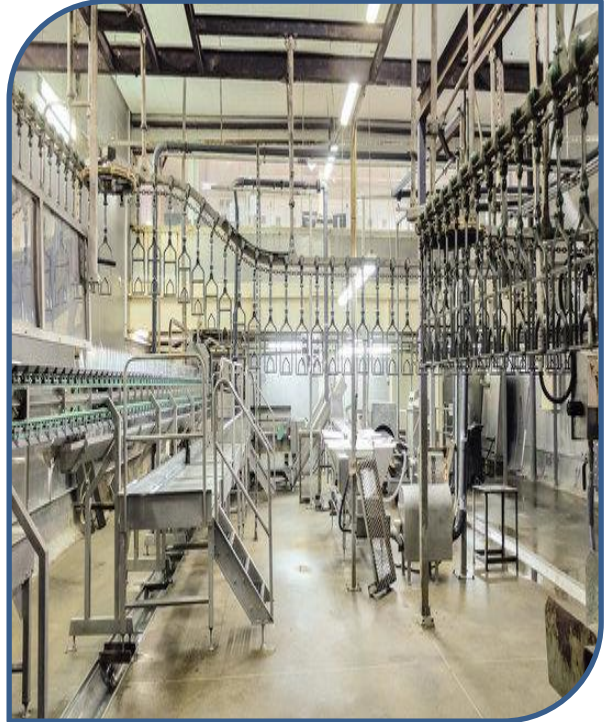
Refrigeration

Blood Processing

Offal's Equipments

ETP & Odor Control

Boiler



About Us



Lahdan is one of the uprising Manufacturing company for Slaughter House equipments, Refrigeration equipments, Rendering Plant equipments, Blood-Processing Plant equipments and Effluent Treatment Plant equipments. We also manufacture of Solid Separators, Bio filters and mechanical composting machineries for solid wastes.

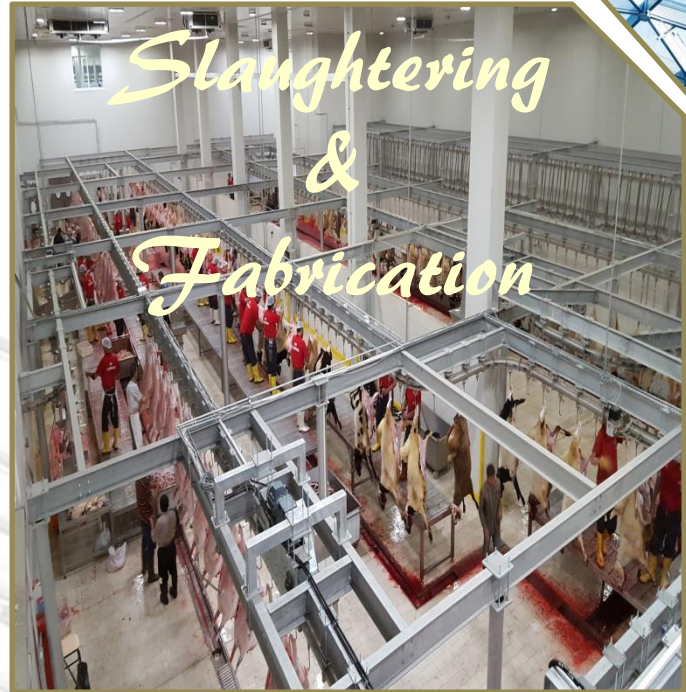
We are the pioneers in providing expert consultancy as well as undertake complete turnkey contracting Services in the field of Establishment of Modern Slaughter House and Meat processing Plant, Rendering Plant, Blood Processing Plant and Effluent Treatment Plant!

We have well equipped complete manufacturing set-up starting from casting & forging, fabrication, machining, assembly and testing with all latest facilities & amenities backed by a strong design engineering and technical team.





In behalf of Lahdan, we would like to take this opportunity to thank our valued Clients, whose continued patronage and confidence in our products and inspires us to extend the best of services and enables us to provide value for their money. With a dedicated team of experienced individuals and an ethos of progressive improvement, Lahdan understands the need for their clients to be supplied with quality, cost effective machinery that lasts.



From then and now, remain determined to serve our valued customers providing the best quality products with excellent service. In response to demand for our best quality products from our valued customers, we have made ourselves capable to produce the products with all sorts of designs, constructions and specifications with a high throughput using the most modern & computerized machines/equipments.



Our Mission

To be a leading light organization that is sensitive to the environment and society, meeting the expectations of all stakeholders with the highest quality, resource utilization, and sustainable production.

To become one of the leading companies among all the industrial companies in the globe with a high value product content of 1 million tons of reinforcing steel production.



Our Vision

- ✓ Contribution to society.
- ✓ Safe, healthy, quality working lives for our people.
- ✓ Product that creates sustainable infrastructure.
- ✓ Provide training for competent and motivated team

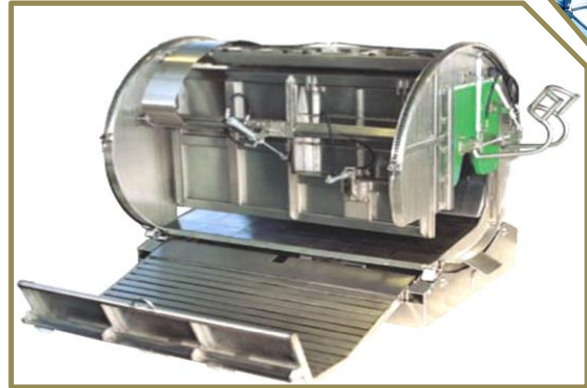


Our Values

Slaughtering Equipments

Rotary Halal Box

- Single or Double
- Pneumatic controlled Doors
- Motorized Rotation
- Hot Dip Galvanized Structure and poly-amide plate and stainless steel Boxes Type S.S. 304
- Rotary box and base
- Cattle collection grid plate
- Cattle entrance device
- Cattle pushing device
- Head clamping device
- Hydraulic pressure station
- Oil cylinder and hydraulic control system and soft pipe
- Hydraulic controlling box



Bleeding Line

- Hot dip galvanized structure
- Motorized line flat rail
- Electro stimulator is used to hang and allow complete bleeding of the animal



Blood Collection Chute

- used to fixed under the bleeding convey rail for blood collection





Dressing Line

- Hot Dip Galvanized Structure
- Pneumatic Leg changing System (Bleeding to Dressing)
- Motorized conveyor 75 x 12 Flat rail
- Sensor controlled carcass movement
- Fixed Platforms for Upper Back & Front Preparation

Leg Changing

- Hot Dip Galvanized Structure
- Pneumatic Leg changing System Platform



Head Conveyor System

- Hot Dip Galvanized Frame work with custom designed chain Platform
- Stainless Steel Hooks
- Integral Hook Sterilization System
- 5 HP Gear Motor

Dehiding Platform

- ❖ Stainless steel rotary drum is attached with two stainless steel puller chains.
- ❖ The structure is hot dip galvanized.
- ❖ The entire assembly goes down by a hydraulic cylinder of 125mm bore and 2000mm stroke.

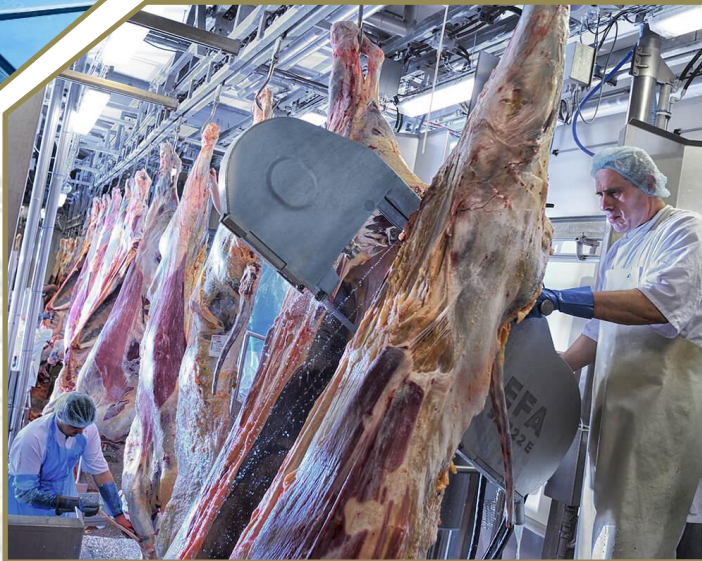


- ❖ The Drum motion is controlled by low voltage electric controls.
- ❖ The hydraulic system is powered by 50hp hydraulic power pack.



Carcass Splitting

Specially designed to split the carcass in two equal halves perfectly with its vertical angular movement for the carcass in continuous line



Splitting Platform

Its aluminum chequered plate stainless steel platform with SS railing. Two hydraulic / single pneumatic cylinders foot valve operated. The hydraulic system is powered by 5HP hydraulic power pack. Speed 100 heads per hour. Unique designs galvanized frame work



Evisceration

- separate the meat from the other internal components of the animals.



Slaughtering Equipments

Doctor Inspection Platform

Pneumatic platform for complete inspection of the carcass



Inspection Area

This platform is used for inspection of meat in slaughter house to prevent and detect public health hazards such as food borne pathogens or chemical contaminants in meat. Traditionally, inspection techniques (visual, placatory and by incision) for the presence of gross lesions, bruises or broken bones have satisfied public health objectives.

Quartering Station

Hot dip galvanized structure
Pneumatic changing system
Fixed Platforms Stainless Steel



Washing Platform

- Stainless steel checkered plate platform with S.S railing.
- * Pneumatic changing System
- * Motorized conveyor rail



Trimming Platform

- * Hot Dip Galvanized
- * Stainless steel Structure
- *Pneumatic changing System
- * Motorized conveyor rail

Weighing Platform

Rail Scales are in-motion scales that attach to a rail system in a meat plant for transporting carcasses. The rail or uni-rail scale is an electronic weighing device designed for use with existing overhead monorail systems in the meat processing industry





Deboning and Sorting

The deboning process involves cutting meat away from the bone using traditional knives or Wizards knives and trimming and cleaning with traditional bladed knives or scissors. The deboned parts are generally packaged as a fresh or flash frozen consumer product.

Chiller Railing Storage

Cold room Chiller with hanging rails designed for storage



Cold room

Cold storage is a facility that primarily stores food items that are short-lived and highly likely to get spoilt under normal conditions. These may include fruits, vegetables, fish, meat etc. These food items are stored under optimum temperature (primarily low) and humid environment as required for individual items.



Air Compressor

The screw air compressor slaughter house plant offer high-pressure air for some machine which need controlling or driving by pneumatic



Tripe Machine

Tripe washer stomach cleaning machine sheep goat abattoir equipment slaughtering machine halal slaughter line slaughterhouse tool



Hot Water Generator

Beef processing water usage, primarily from carcass washing and process cleanup, has been reported in the range of 150 to 450 gallons per animal processed.

Butchery Cutter



Carcass Splitting band Saw

The splitting saw is used worldwide for splitting fat cattle, bulls, oxen, and horses. This splitting saw is suited for the largest animals as it consists of 400-600 carcasses per blade

LEG CUTTER

Leg-horn cutting shears: The shear performs an accurate cutting the back and forward joints on the legs and horns, or bone alignment process. Easily provides cutting process. Powerful hydraulic tank. Made from stainless steel. The long lasting and corrosion proof blades is maintenance free.



Brisket Saw

ELECTRIC OPERATED WITH SPIRAL CABLE
It is used in slaughterhouse systems for cutting the anterior chest bones of cattle. The saw is controlled manually with the help of the balancer. It is mounted on the opening station

Butchery Cutter



Bone saw

Bone saw machines are used for cutting frozen meat and bones to smaller sizes. They are available in different sizes and with different power capabilities. They can be used both for residential and commercial purposes although mostly they are bought for the latter.



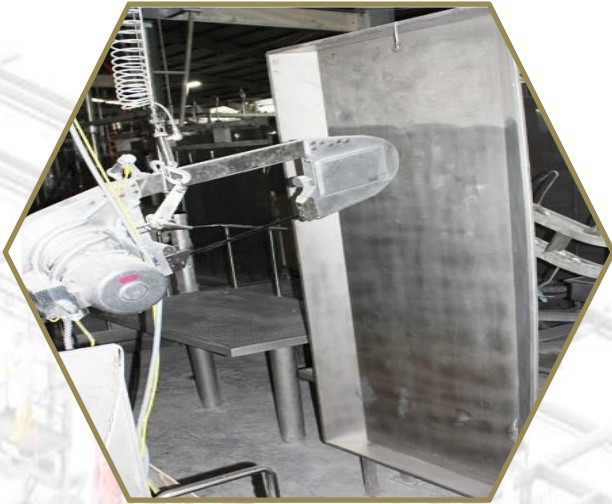
Butcher's Knives

Different sizes of knives for different cutting needs

Carcass Splitting Blade

These blades are engineered to handle large volume jobs and deliver a punishing breaking operation. They also reduce downtime while breaking and quartering





Carcass Splitting Screen

It is use to avoid splashing of bone powder
Made of Stainless Steel 304 material



Skin Peeling Chain

Hot Dip Galvanized chain



Roller Bleeding Table

Made of Stainless steel 304



Hair Removal Machine

Dehairing machine is designed to remove the bristles from carcasses and sows after scalding process.

Slaughter House Equipment



S.S Trolleys



Shoe Washer



Working table



Boots stand



Flat Trolley



Lockers

Slaughtering Accessories



Hygiene Station

Hand wash basin



Hooks



Rail scale



V-type transport belt



Panel Board



Conveyor belt

Slaughtering Accessories



Soap Dispenser



Hand Dryer



Waste Bins



PVC & Lab Coat



Insect Killer



Air Curtain



Gloves & Boots



Reusable Disposable Hair Nets

Slaughtering Gallery



Slaughter Rails

Slaughtering Gallery



Slaughter Rails

Slaughtering Gallery



Slaughter Rails

Slaughtering Gallery





Slaughtering Gallery



Rendering Equipment

Batch Cooker

For the cooking of raw materials under pressure. Suitable for Buffalo, Goat, Chicken, Fish and other mediums

Type	Capacity	Power / Motor
Cooker 4x10	2Tons	22Kw
Cooker 5x12	3Tons	37Kw
Cooker 5x20	6Tons	55Kw

Type	Capacity	Power / Motor
SP	1500Kg/Hr	22Kw
SP	2000Kg/Hr	55Kw
SP	4000Kg/Hr	75Kw



Screw Press

These presses are used for the extraction of tallow or oils from animal cracklings and other products where oil or moisture needs to be expelled. A dry cake like product is also expelled from the choke end. A Single stage press normally used where the cracklings enter the press at near end point cooking temperature . An optional variable speed tempering box is can be provided to raise cracklings temperature. Suitable for continuous or batch plant operation.

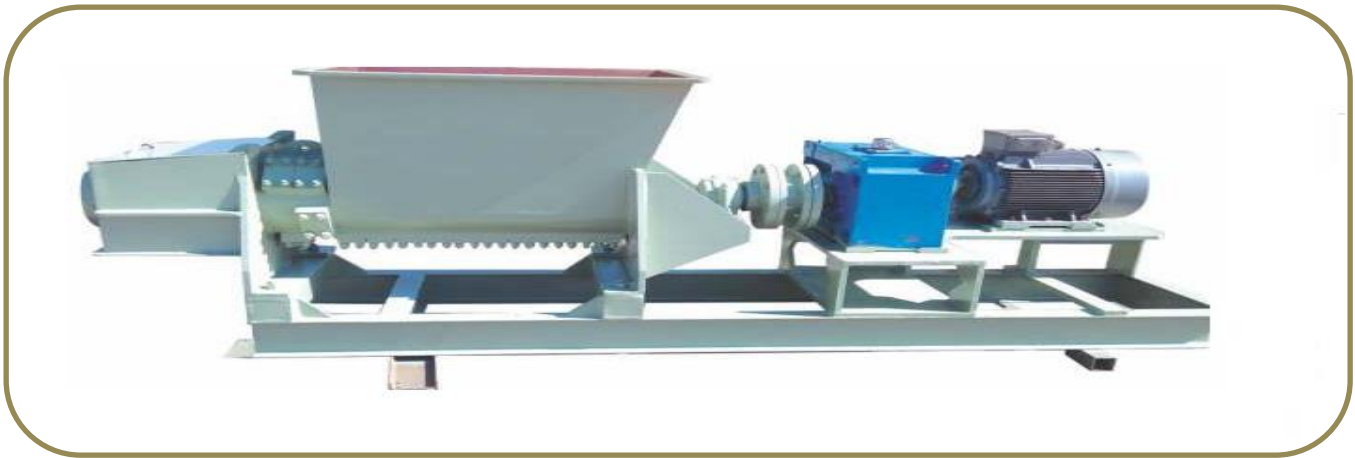
Rendering Equipment

Pre Breaker

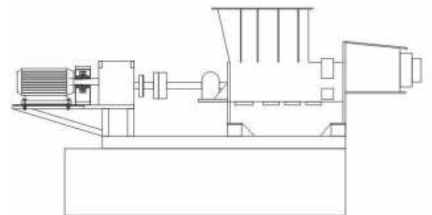
The Pre-breaker is an extremely heavy duty machine designed for size reduction to two inch for all typically found in the Rendering Industry.

Whole carcasses of all agricultural species, all Slaughter House offal and pure bone material can be reduces easily without any problems.

To increase capacity 12-14% and to optimize the cutting process as much as possible, the Pre-breaker is equipped with 7 cutting knives instead of the usual 15 as in most competitive machinery. The new and improved stuffing boxes ensure almost no leaks or drips with easy-to-manage weekly maintenance. It is Equipped with a solid shaft and hard-faced special steel knives.



Type	Capacity	Power / Motor
PB2	3Tons	37Kw
PB4	6Tons	45Kw
PB6	10Tons	55Kw
PB8	20Tons	75Kw
PB10	30Tons	110Kw





Hammer Mill



For the reduction of particle size meat meal and wide array of other mediums



Bio Filter

The system design was for Rendering Plants where only highly odorous process air was collected and treated



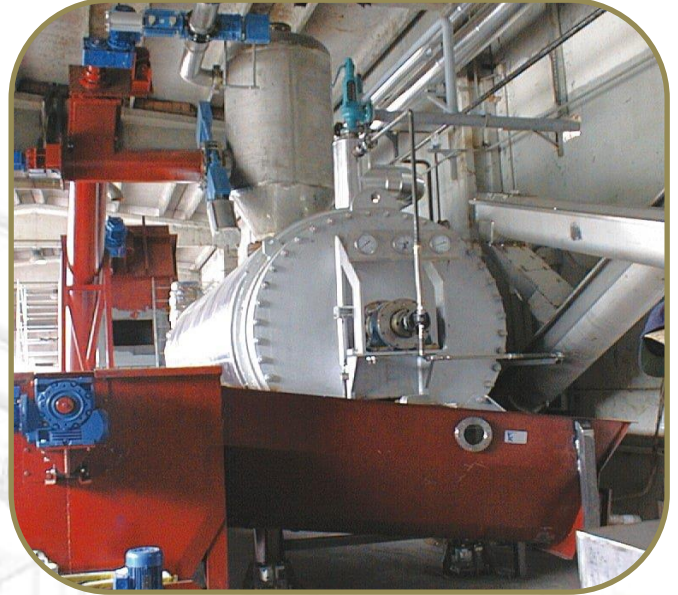
Shell & Tube Condenser

The Shell and tube condenser is used to condense vapors by indirect contact

Blood Coagulation

Blood Process

modern coagulation and sterilization system for blood processing: the raw material is subjected to steam injections inside a pressure tube, after that the molecules are separated in solid and liquid ones. The solid (about 30% of the fresh inlet blood) is dried and transformed into a meal, although the liquid part is conveyed to the water depuration system of the abattoir



Raw Material Bin

The bin is made of M.S Plate Square box with Legs, completed with 5 HP Geared motor including duplex chain & sprocket and fitted with plumber bearing in the end

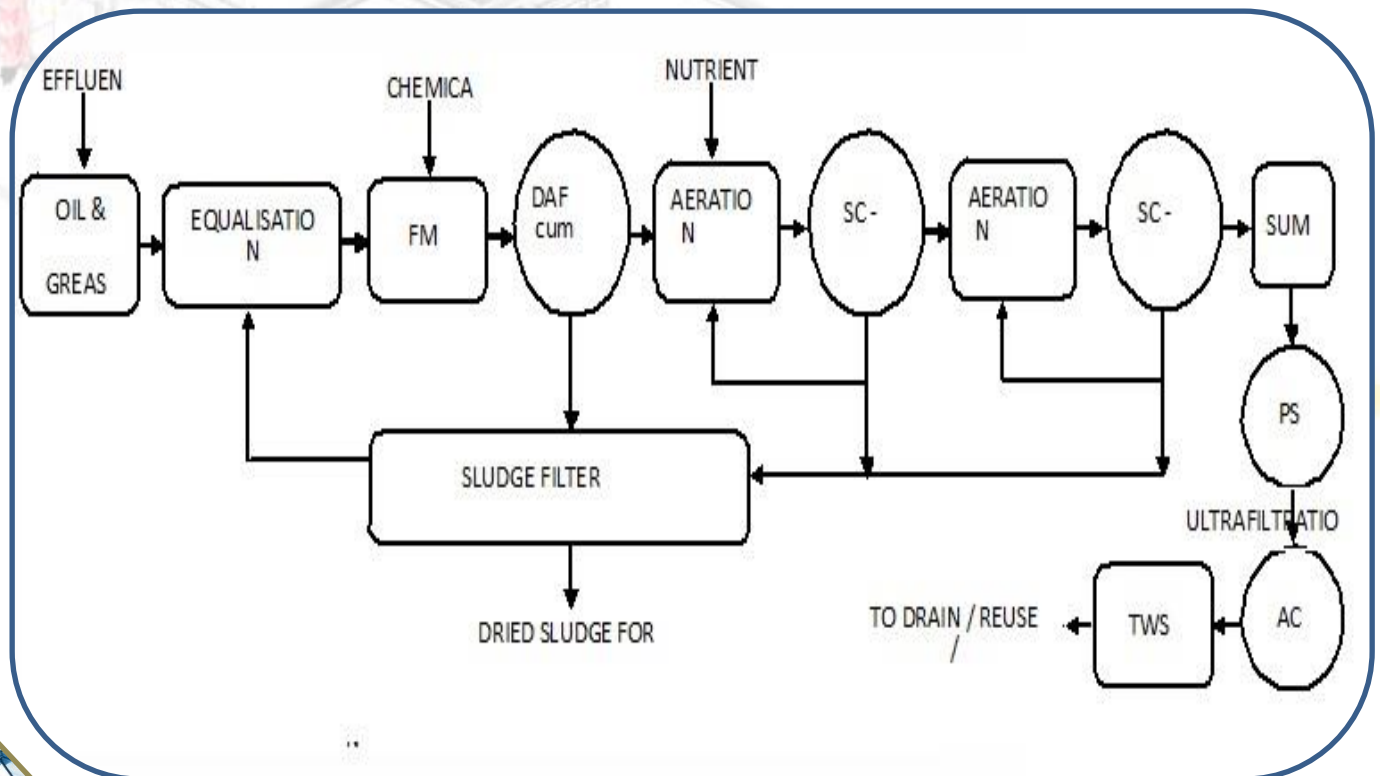
Tallow Tanks

The tallow is carried in specially designed tankers where the tanks are fitted with low pressure steam heating coils to enable the product to be kept in its liquid form for pumping out at destination ports. Because of its properties and long carbon chain, tallow has a huge number of uses.



Effluent Treatment Plant

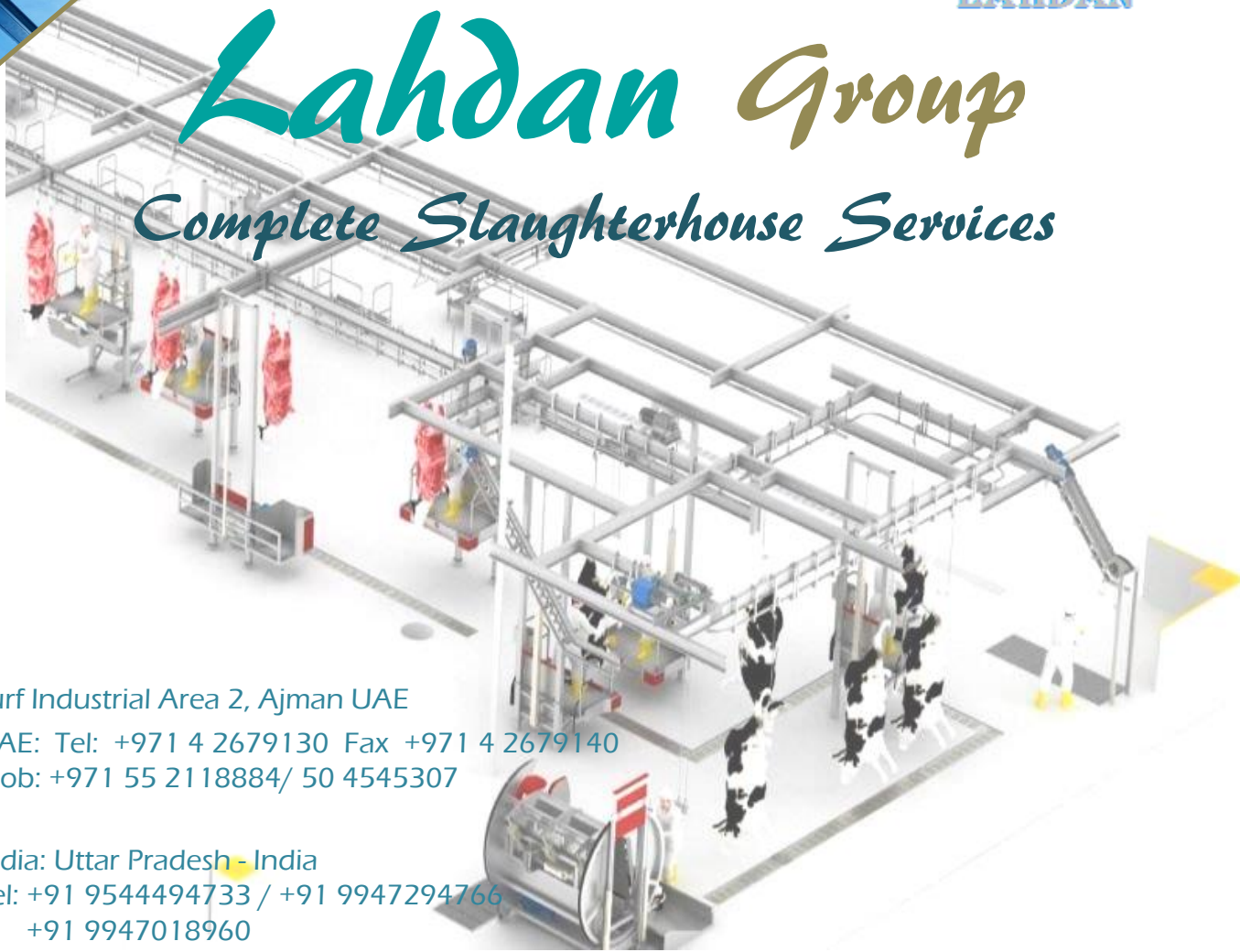
Slaughterhouse wastewater (SWW) contains organic loads which includes paunch, feces, urine, blood, lint, fat and lard, carcasses, undigested food, microbial pathogens, pharmaceuticals, disinfectants, loose meat, suspended material, and facility cleanings





Lahdan Group

Complete Slaughterhouse Services



Jurf Industrial Area 2, Ajman UAE

UAE: Tel: +971 4 2679130 Fax +971 4 2679140

Mob: +971 55 2118884/ 50 4545307

India: Uttar Pradesh - India

Tel: +91 9544494733 / +91 9947294766

+91 9947018960

Email : Lssmuae@gmail.com

Website: www.Lssmuae.com

Website



Instagram



facebook



You Tube



twitter



Please follow us on our social media accounts